



# Third-Party RF Keypad Compatibility

---

Bond Bridge Pro is now compatible not only with Bond Sidekick but also with certain third-party RF keypads. This functionality is being made available as a Limited Beta. This may become a paid feature in the future.

With this feature, you can link button presses from Lutron Pico remotes to specific actions on devices on the Bridge.

## Compatible Keypads

- Lutron Pico remotes (Clear Connect Type A)

Clear Connect Type X keypads (RadioRA 3 wired keypads) are not supported by Bond Bridge Pro.

## System Requirements

- Bridge firmware version v3.12 or higher
- Bond Home app version v2.45 or higher
- dedicated Bond Bridge Pro strongly recommended\*

**\* NOTE:** Bond Bridge Pro can both transmit and receive, but it cannot do both simultaneously. Therefore, using only a single Bridge may result in missed keypresses if the user presses a key while the Bridge is busy transmitting to operate one of the appliances. So, if you are using Bond Bridge Pro to control RF appliances (such as Somfy, Gafosa, and other RF shade motors), then we strongly recommend adding a dedicated Bond Bridge Pro to listen to signals from the keypads.

## Capabilities

- Open or Close one or more shades in response to a key press
- Control light on/off and speed of ceiling fans
- Up to 50 keypads may be added to a single Bridge
- Up to 20 actions may be programmed per key event\*

At the time of writing, the following capabilities are **not** supported:

- Linking a key press to a group action\*\*
- Setting a shade to a specific position
- Toggle open/close state
- Scenes

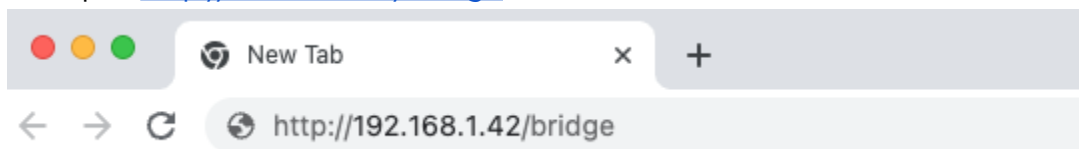
**\* NOTE:** Adding more than one action will cause longer transmit times and so will worsen the user experience if you have only a single Bond Bridge Pro. Adding more than one Bridge resolves this issue.

**\*\* NOTE:** Instead of linking a key press to a group, you must link to each device individually, and shade hembars/weight bars will not be aligned.

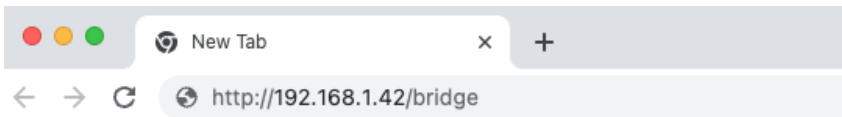
## Setup Guide

1. Ensure your Bond Bridge Pro is on the latest stable or beta firmware.
2. In the Bond Home app, go to Devices > Bridge Settings > Network.
3. Tap on the IP address to copy.
4. Switch to a web browser like Safari or Chrome.
5. Paste the IP address in the address bar, add /bridge, and submit.

Example: <http://192.168.1.42/bridge>



6. Select the option "Third-Party RF Keypads" as shown below, and hit "Save". The Bridge will reboot. This usually takes less than 10 seconds but may take up to 90 seconds in some circumstances.



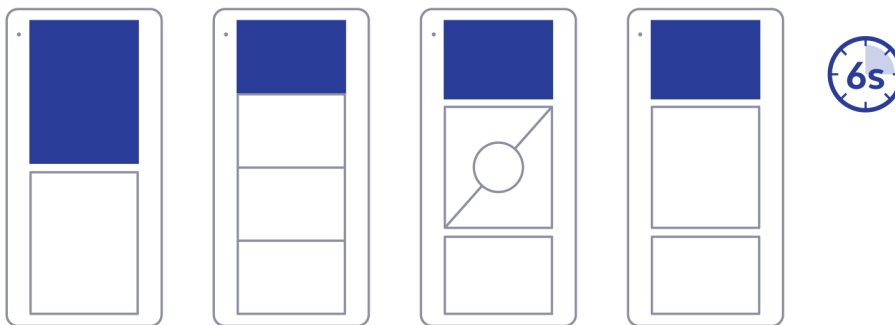
## Background RX Mode

Select desired mode that the bridge listens to:

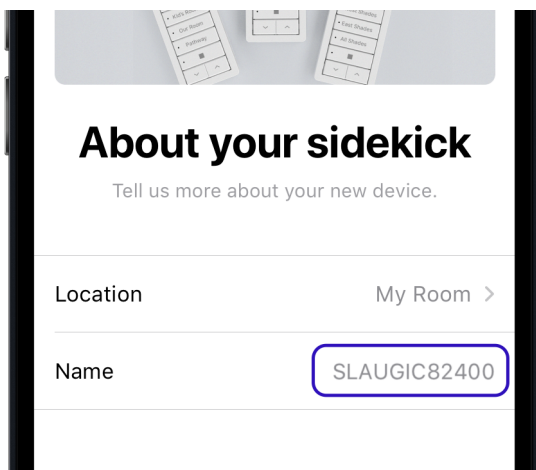
- Bond Sidekick (BondSync)  
 Third-Party RF Keypads

Save

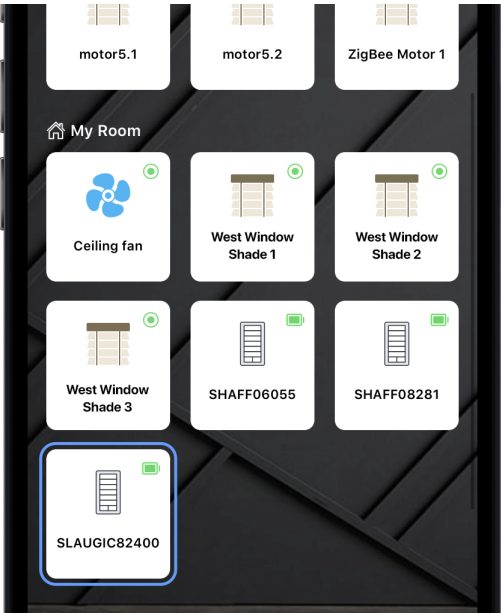
- In the Bond Home app, go to Devices > (+) > Sidekick.  
*NOTE: The Bridge is treating the third-party keypad as if it were a Sidekick. This is why you select the Sidekick option.*
- When prompted, hold down the uppermost button on the keypad. After approximately 6 seconds, the Bridge should recognize the keypad.



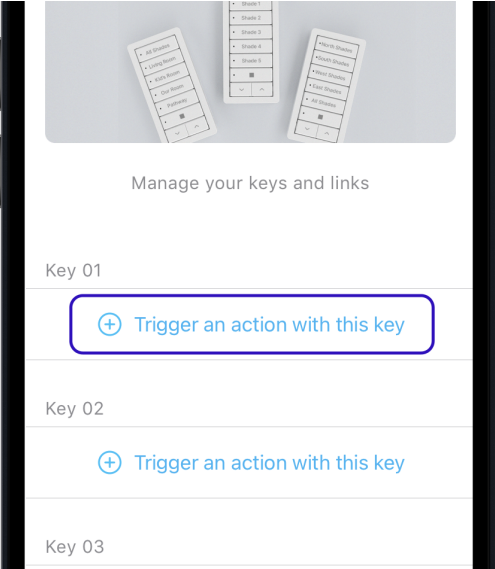
- Assign the keypad to a room and give it a reasonable name. By default, the app will assign a name based on the keypads' internal ID used by the Bond.



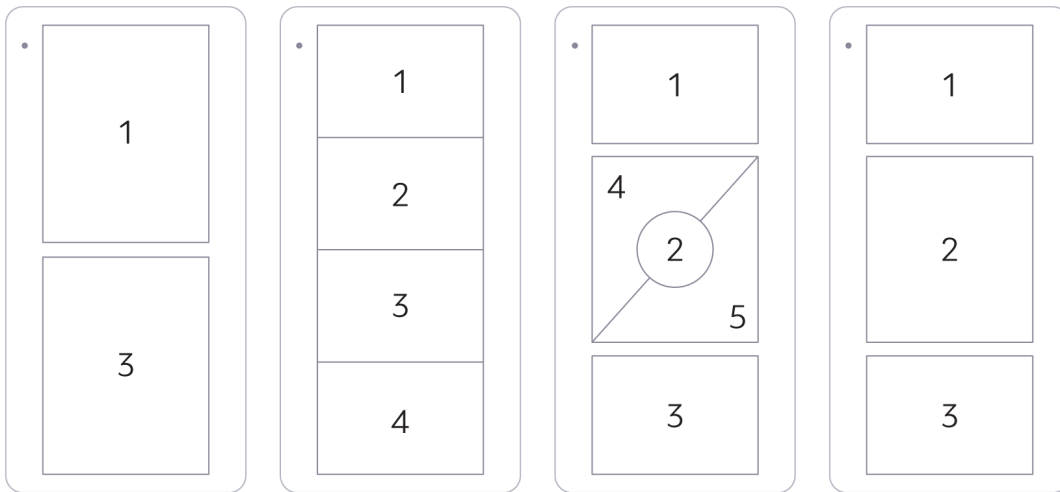
10. The keypad will now appear on the My Devices screen in the location you have specified.



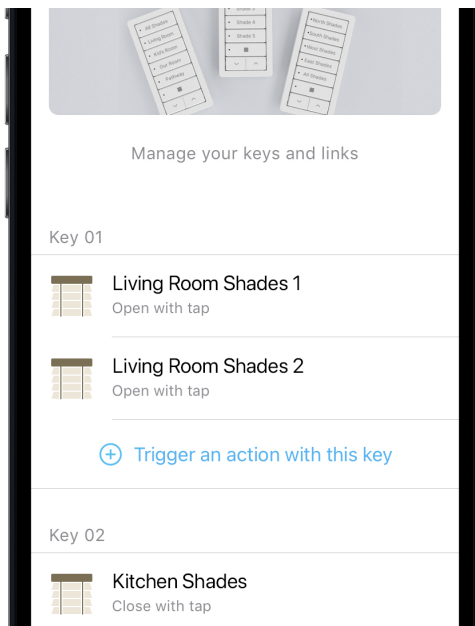
11. Tap on the keypad card. This will open the keypad linking screen.



12. Tap on the (+) corresponding to the key you wish to program. Note that the app always shows 5 keys, even if your keypad has fewer keys. See the chart below for the mapping of key number to the physical key on your keypad.



13. When asked, please choose "Tap" as the action. Other actions such as "Double Tap" and "Hold" are not supported for 3rd-party keypads.
14. You will be prompted for which device you wish to control, and what action on that device you wish to trigger when the key is pressed. Follow the in-app instructions.
15. As soon as you are back at the linking screen, you can test by simply tapping the button on the keypad.



## Trademarks

Lutron, Pico, RadioRA 2, RadioRA 3, and Clear Connect are trademarks or registered trademarks of Lutron Electronics Co., Inc., in the U.S. and/or other countries. We use these trademarks for the sole purpose of identifying products compatible with Bond Bridge Pro. This use does not imply any endorsement by or affiliation with the trademark owner.